

ENVIRONMENTAL MANAGEMENT AND COMPLIANCE ON GOLF COURSES

MY TURF PORTAL



ENVIRONMENT FOCUSED MANAGEMENT ON GOLF **COURSES**

If we care about the environment we need to genuinely and constantly focus on reducing resource use when maintaining golf courses. All decisions about turf management should be based on this aim.

Why?

ENVIRONMENT FOCUSED MANAGEMENT ON GOLF **COURSES**

Three aspects:

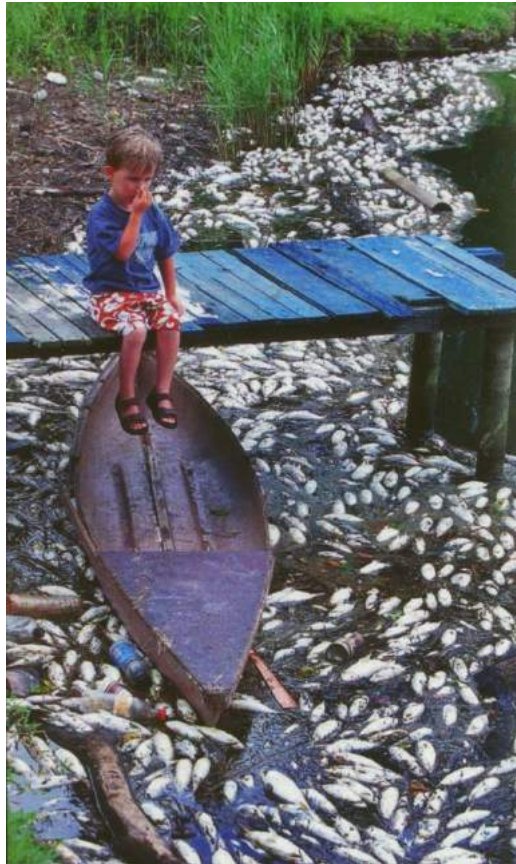
1. Compliance with relevant environment related laws

2. Turf management of the golf course



3. Environmental good from the golf course

ENVIRONMENT FOCUSED MANAGEMENT ON GOLF COURSES **I: COMPLIANCE**



Over 10,000 fish were killed as a result of the February 2001 pesticide spill at the Warringah Golf Club, an accident which cost the club \$600,000 and its former superintendent 250 hours of community service

ENVIRONMENT FOCUSED MANAGEMENT ON GOLF COURSES: **2.TURF MANAGEMENT**



NZ • SPORTS • TURF
INSTITUTE



ENVIRONMENT FOCUSED MANAGEMENT ON GOLF COURSES: **3.ENVIRONMENTAL GOOD**



ENVIRONMENT FOCUSED MANAGEMENT ON GOLF COURSES: **TURF MANAGEMENT**

Why is it the environmental elephant in the room?

- Because golf course turf management uses significant amounts of resources (water, fuel, pesticides)
- But golf does not focus strongly on reducing and minimizing resource use

ENVIRONMENT FOCUSED MANAGEMENT ON GOLF COURSES: TURF MANAGEMENT

- Why is it important? Because of massive increases in global population and resource use.
- We can do something about consumption and resource use in turf management on golf courses
- Reducing consumption needs to become the main focus of turf management decisions
- e.g. “If we do this, will it reduce our resource use?”

ENVIRONMENT FOCUSED MANAGEMENT ON GOLF COURSES: TURF MANAGEMENT

- We need to set a BAG (big audacious goal) (e.g. 50% reduction in resource use not 5% “but we do it in a greener way”)
- An example: Predator free NZ 2050
- Whilst maintaining “suitable” playing conditions.



ENVIRONMENT FOCUSED MANAGEMENT ON GOLF COURSES:

- Resource use reduction much more “doable” in this industry than in many others.
- Huge potential simply through educating golfers about why they should accept slightly lower standards.
- Difficult for individual golf clubs especially in large cities – needs to be led from the top down (international, national and regional golf associations)
- Best \$\$ spent on environment related research could well be \$\$ spent on figuring out how to more effectively communicate these things to golfers

ENVIRONMENT FOCUSED MANAGEMENT ON GOLF COURSES:

- How “suitable” not perfect makes a big difference



ENVIRONMENT FOCUSED MANAGEMENT ON GOLF COURSES:

Always focusing on the environmental impact of turf management activities will allow us to change these discussions.

- “The golfers are demanding faster greens” “Can we afford it?” “Yes”
“Ok then its a green light, lets do it” .
- “The golfers are demanding faster greens.” “Can we do that without increasing resource use?” “No.” “Well then we cant do it unless we can find a way to do it that actually reduces our harm to the environment”
“Let them know – they will understand because we have educated them about our focus on reducing resource use”.

ENVIRONMENT FOCUSED MANAGEMENT ON GOLF COURSES:

- How region wide initiatives would make a difference



ENVIRONMENT FOCUSED MANAGEMENT ON GOLF COURSES:

- If we care about the environment, we need to constantly focus on reducing resource use when maintaining golf courses – every turf management decision needs to be based on this
- Let's make some good news stories

MAINTENANCE ACTIVITIES ARE GOVERNED BY LEGISLATION



MY TURF PORTAL – SUPPORTING CLUBS TO BECOME COMPLIANT



- Lack of compliance poses significant risk to clubs and the game
- Understanding requirements is often difficult
- Supporting Golf Clubs through the compliance process
- Catering for all golf clubs



NZ • SPORTS • TURF
INSTITUTE



MY TURF PORTAL - NZ GOLF ENVIRONMENTAL GROUP



■ <http://myturfportal.nzsti.com/>

■ Web based

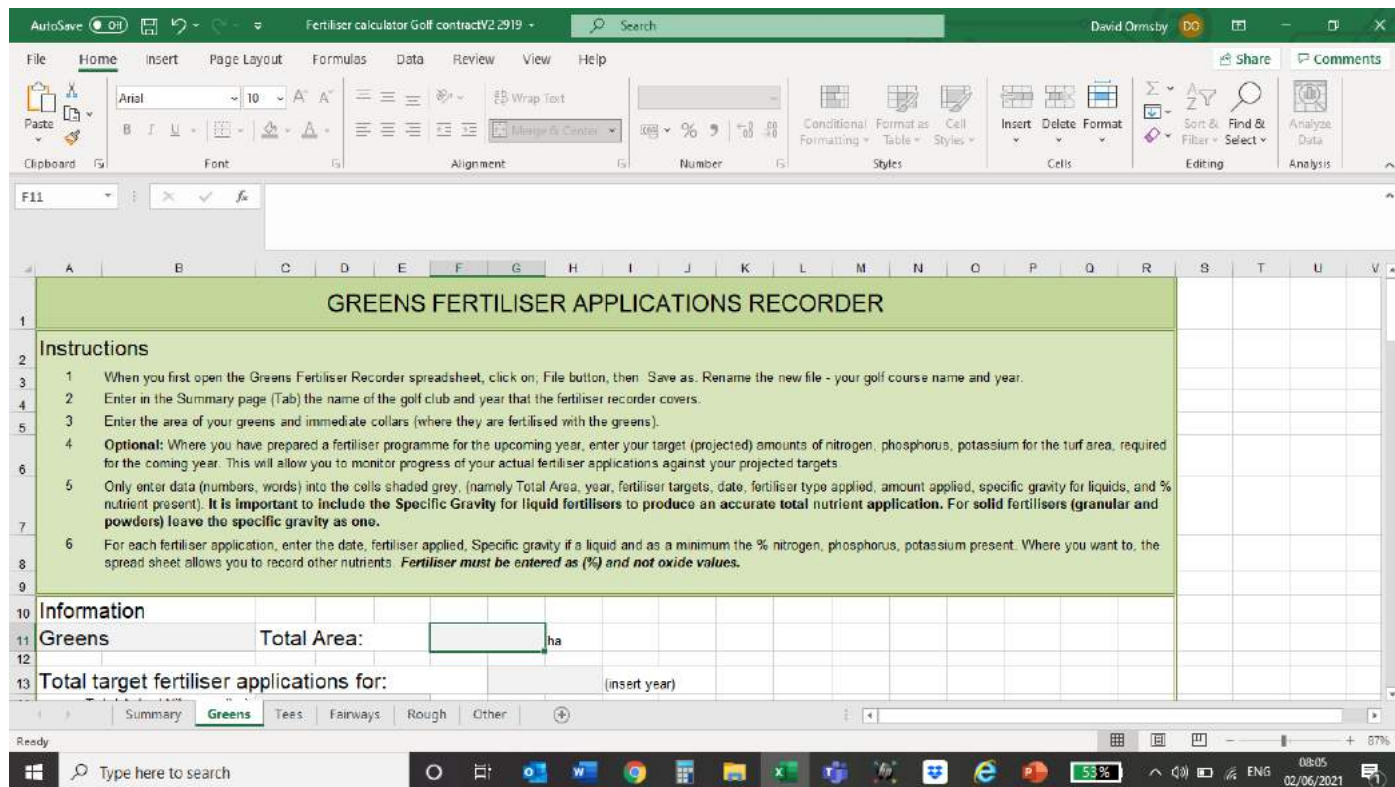
■ Provides

■ Supporting information
(rules)


■ Templates

■ Calculators

MY TURF PORTAL – INFORMATION IS POWER!



MY TURF PORTAL – RESOURCES & CALCULATORS

A	B	C	D	E	F	G	H
							
Staff member:							
Formal training							
Qualification			Certificate Number		Issued Date and/or Expiry Date		
					-- / -- / ---- to -- / -- / ----		
					-- / -- / ---- to -- / -- / ----		
					-- / -- / ---- to -- / -- / ----		
					-- / -- / ---- to -- / -- / ----		
					-- / -- / ---- to -- / -- / ----		
					-- / -- / ---- to -- / -- / ----		
					-- / -- / ---- to -- / -- / ----		
Informal (on-job) training							
Machinery Induction							
Machine	Read instruction manual	Setting / pre operation checks	Site specific operating procedure	Visual observation	Signature - manager	Signature - staff	

MY TURF PORTAL – RISK MANAGEMENT



MY TURF PORTAL - HEALTH & SAFETY



MY TURF PORTAL – THE ENVIRONMENT



GOLF PROSPERING IN THE 'NEW WORLD'



<http://myturfportal.nzsti.com/>

LABOSPORT



NZ • SPORTS • TURF
INSTITUTE

70
YEARS
EST. 1949